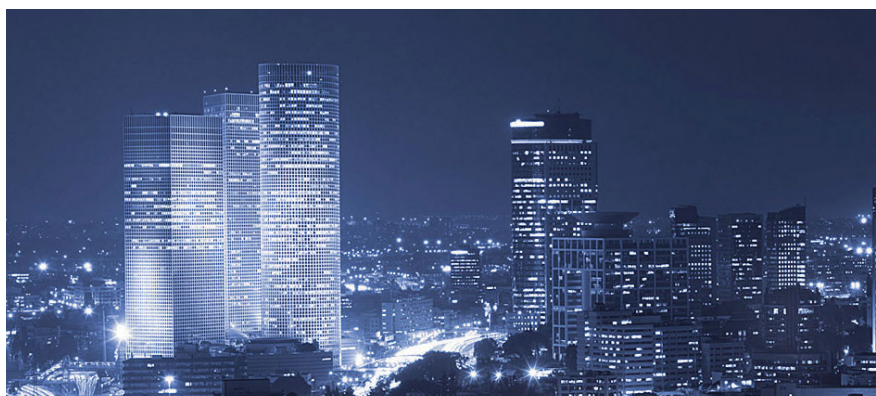
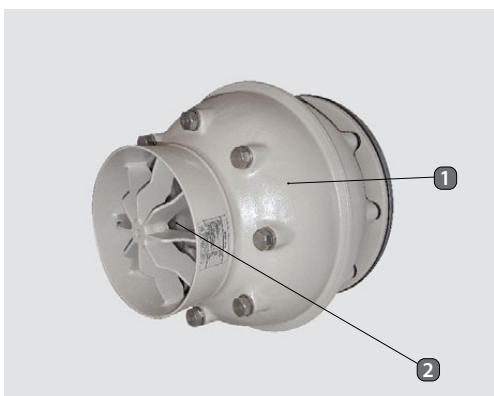


# Blast Valve

## Type E 1540

(NATO Stock Number 4240-99-134-8913)



### Overview

The Blast Valve Type **E 1540** is a heavy duty valve that protects the interior of a shelter from blast waves caused by outside explosions. The valve is normally open. It withstands blast waves of 60 bar (842 psi) reflected pressure. The valve is tested and certified for compliance to the applicable Israeli, Singaporean, and Swiss standards.

### Description

The Blast Valve Type **E 1540** is a double-action valve (protects against explosive and implosive waves). It is maintenance-free and resistant to high temperatures and corrosion. The springs are manufactured from special stainless steel and all steel parts are phosphate treated and finished with a powder coating.

#### Illustration:

1. Housing
2. Closing Disk

### PRODUCT USE:

- Installed at the air intake inside the shelter to ensure proper operation
- Installed on an 8" flange according to BS 4504 – PN 6 or DIN 2501 – PN 6
- Should be installed only with equipment that has been manufactured by Beth-El Industries to ensure maximum performance



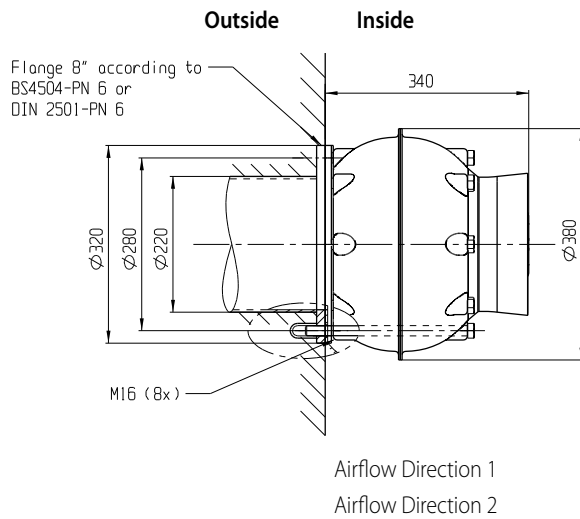
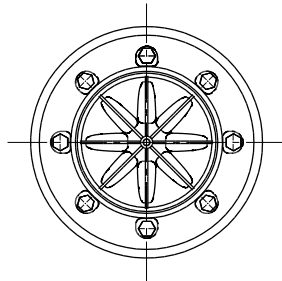
Certified Quality Assurance Program According to AQAP-2110





## Approximate Dimensions:

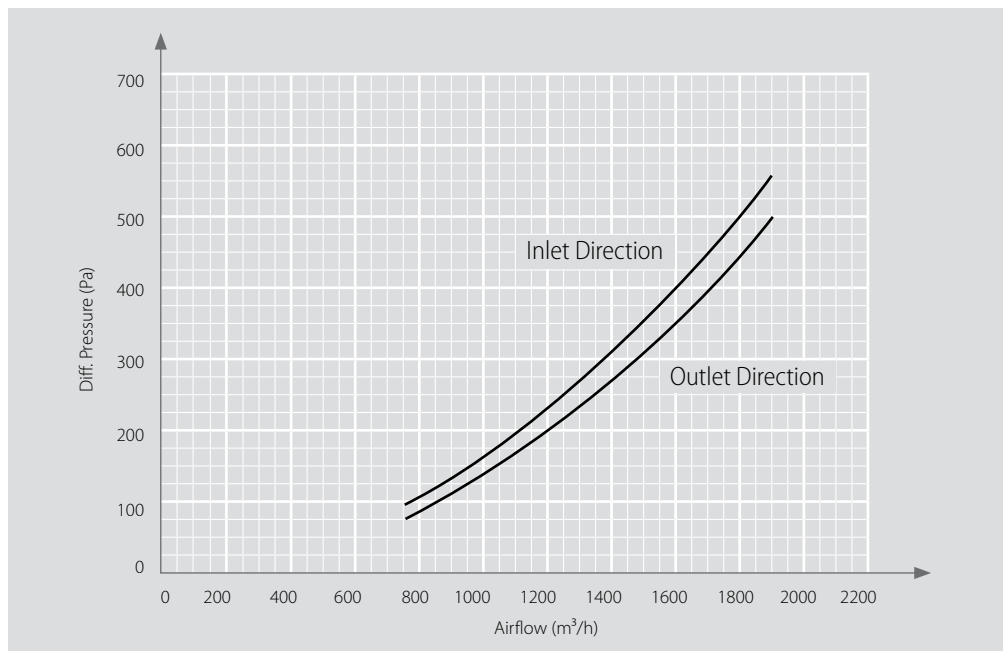
all dimensions are in mm



## CERTIFICATIONS:

- Tested and certified for compliance to the applicable Israeli, Singaporean, and Swiss standards
- Quality control according to ISO 9001
- Quality assurance according to AQAP 2110

## Pressure Drop on Airflow E 1540:



## Specifications for the E 1540:

Product No:	B00709	
Airflow Rate:	400-2000 (295-1183)	m³/h (cfm)
Flow Resistance:	See Diagram	
Incident Pressure Durability:	1100 (154)	kPa (psi)
Reflected Pressure Durability:	4000 (560)	kPa (psi)
Working Temperature:	-25 to +80 (-13 to +176)	°C (°F)
Mechanical Shock Resistance:	60	g
Installation Matrix	≥ 520 x 520	mm

Specifications are subject to change without prior notice.

## Beth-El Industries Ltd.

1 Avshalom Road  
Zikhron Yaaqov, Israel  
Tel: + 972-4-629 9999  
www.beind.com