

# Blast Valve

## Type E 1540 RV-HT



### Overview

The Blast Valve Type **E 1540 RV-HT** is a heavy duty valve that protects the interior of a shelter from blast waves caused by outside explosions. The valve is designed to be installed in exhaust pipes of generators and is normally open. It withstands blast waves of 60 bar (842 psi) reflected pressure. The valve is tested and certified for compliance to the applicable Israeli, Singaporean, and Swiss standards.

### Description

The Blast Valve Type **E 1540 RV-HT** is a double-action valve (protects against explosive and implosive waves). It is maintenance-free and resistant to high temperatures and corrosion. The springs and closing disc are manufactured from special stainless steel and all steel parts are treated with a high temperature resistant coating.

#### Illustration:

1. Housing
2. Closing Disk

### PRODUCT USE:

- Installed at the air intake inside the shelter
- installed inline between 8" flange according to BS 2504 - PN 6 or DIN 2501 - PN 6
- Should be installed only with equipment that has been manufactured by Beth-El Industries to ensure maximum performance



Certified Quality Assurance Program According to AQAP-2110



CBRN-Filtration & Ventilation Systems



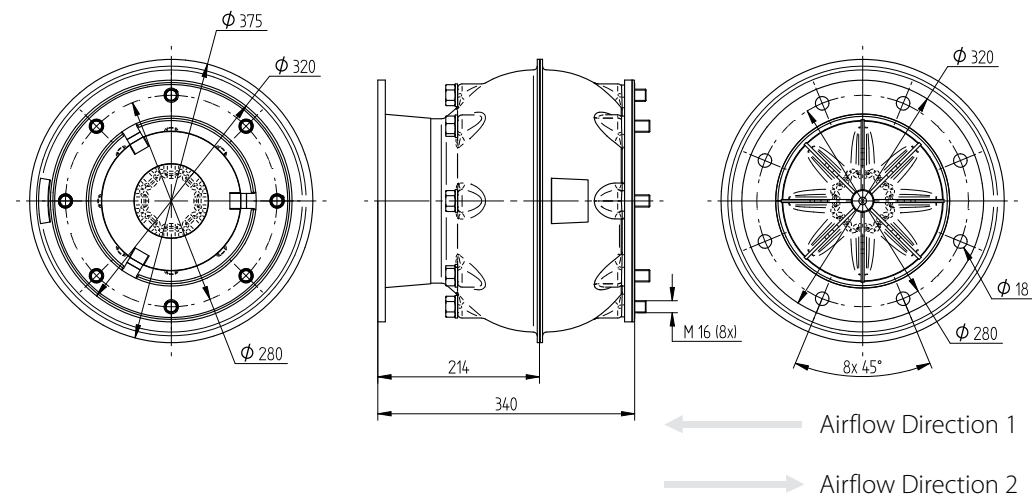


## CERTIFICATIONS:

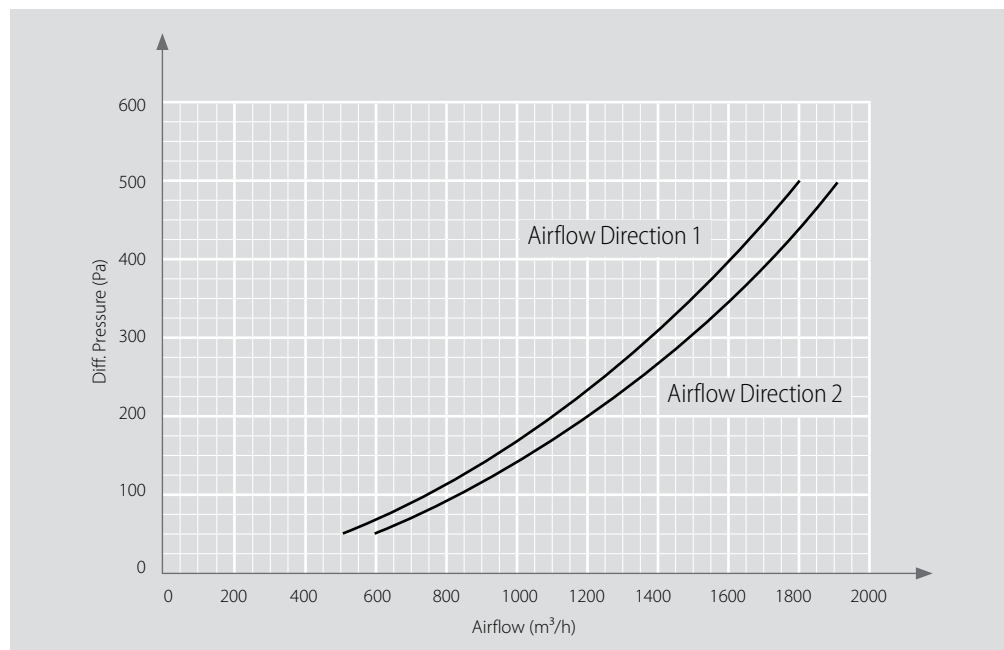
- Tested and certified for compliance to the applicable Israeli, Singaporean, and Swiss standards
- Quality control according to ISO 9001
- Quality assurance according to AQAP 2110

## Approximate Dimensions:

all dimensions are in mm



## Pressure Drop on Airflow E 1540 RV-HT :



## Specifications for the E 1540 RV-HT :

|                                |                            |            |
|--------------------------------|----------------------------|------------|
| Product No:                    | B00710                     |            |
| Airflow Rate:                  | 400-2000 (295-1183)        | m³/h (cfm) |
| Flow Resistance:               | See Diagram                |            |
| Incident Pressure Durability:  | 1100 (154)                 | kPa (psi)  |
| Reflected Pressure Durability: | 4000 (560)                 | kPa (psi)  |
| Working Temperature:           | -25 to +540 (-13 to +1004) | °C (°F)    |
| Mechanical Shock Resistance:   | 60                         | g          |
| Installation Matrix:           | ≥ 520 x 520                | mm         |

Specifications are subject to change without prior notice.

## Beth-El Zikhron Yaaqov Industries Ltd.

1 Avshalom Road  
Zikhron Yaaqov, Israel  
Tel: + 972-4-629 0000  
www.beind.com